

Friendship & Community

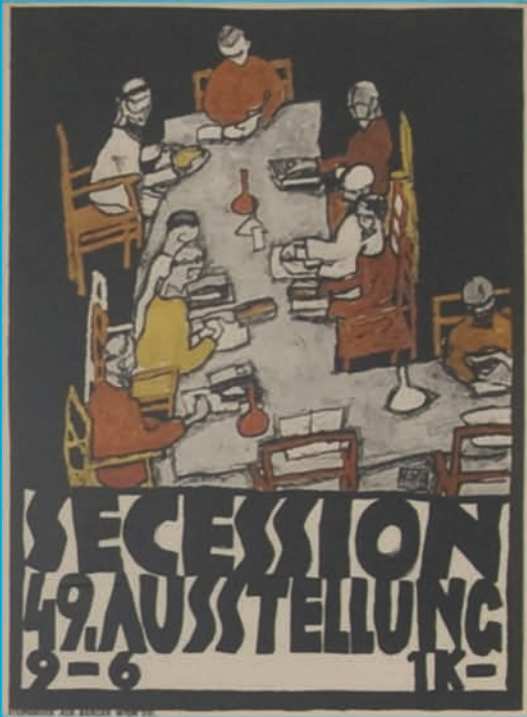
family guide

We are celebrating 100 years of connecting the community with art at the GRAM!

Discover some amazing artists who joined together to create wonderful works of art. This gallery guide also highlights the importance of family, friends, and communities by leading you to a few special paintings!

Can you find the *Secession 49. Ausstellung Plakat* by Egon Schiele?

Ausstellung Plakat is German for exhibition poster!



What colors do you see in the poster? Circle all that apply.

BROWN **GREEN** **PURPLE** **YELLOW**
WHITE **BLACK** **ORANGE** **RED**

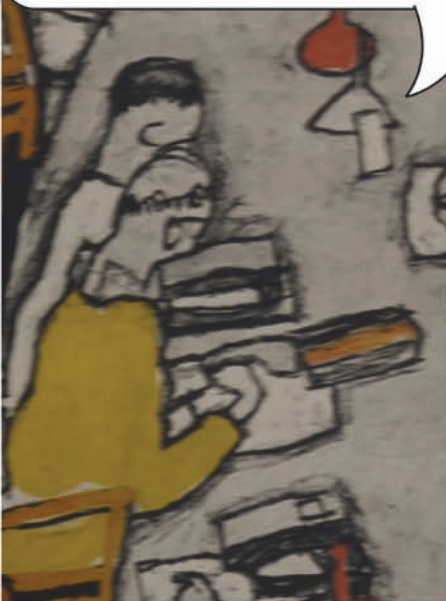
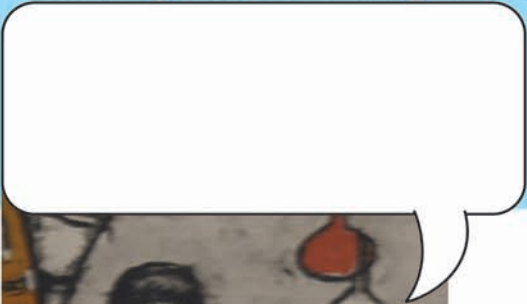
How many legs do you see in the poster? _____ legs
 (There may be more than you think!)

Why do you think Schiele left some chairs empty?

What do you think the people at the table are doing?

Schiele was a part of a group of artists who called themselves the Vienna Secession. These artists created work in a similar style. Are you a part of a club or group in your community? Why is it important to you?

What do you think these two people from the poster are talking about?



Can you find this lonely fisherman on the third floor? What is the name of the painting that he is in?

Do you think the crate that he is pulling out of the water is heavy? What do you think is in it?

If N.C. Wyeth painted friends for the fisherman, how could they help him? _____



Now let's head to the third floor!
Can you find *Ingleside* by
Richard Diebenkorn?

Which of the following things do you *not*
see in this painting?

trees roads people houses

This is a painting of a small community
subdivision in America. What state do you
think it is in? Why?

If you walked down this street what do you think
you would find on the other side of the hill?

Draw a picture of your community below! You can include things like:
family, friends, places you visit, group activities, or anything else you that
like about your community!

Check
out our
family Web
page by clicking
the Families button at
ArtMuseumGR.org!

Egon Schiele, Seseion 49.
Ausstellung Plakat (Exhibition
Poster), 1918, Color Lithograph
on thin wore paper, Museum Purchase,
Hollis Baker Fund.

N.C. Wyeth, Checking the Traps, c. 1938, Oil on canvas,
Gift of Peter M. Wege, 2007.

Richard Diebenkorn, Ingleside, 1963, Oil on canvas, Museum Purchase, 1967.1.1.