

Family Activity Guide

Clues with Haiku

BECOME A GRAM DETECTIVE!

Your mission is to find **three** pieces of art throughout the Museum's permanent collection by using the haiku clues below. Good luck young detective!

(Answers on the back)

#1



Colorful *River*
Many wild lines throughout
Paint is everywhere.

Painting:
Artist:

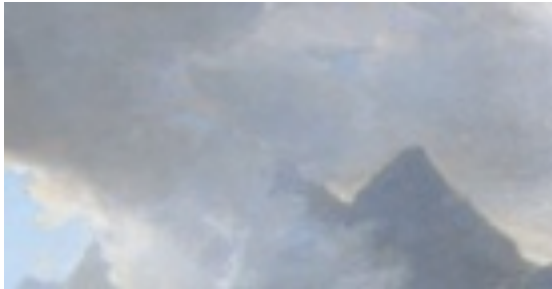
#3



Sunny in the room
Quietly, I read a book
The walls are yellow

Painting:
Artist:

#2



A giant mountain
Looks like it's smoking but not
The people are small

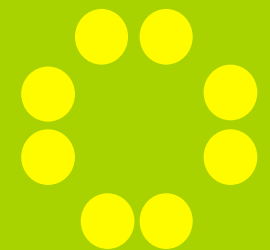
Painting:
Artist:

"Haiku" is a traditional form of Japanese poetry.

Haiku poems consist of **3 lines**. The lines rarely rhyme.

The **first and last** lines of a Haiku have 5 syllables and the **middle** line has 7 syllables

Once you have completed this operation, stop by Visitor Services or the Education Center to receive a **prize**.



Can you write a haiku clue describing your favorite piece of art here at GRAM?

(5 syllables)

(7 syllables)

(5 syllables)

Name of piece:

Artist:

Draw your favorite piece of art!
What shapes do you see?
Is it a painting or a sculpture?

All Day with the Arts

Saturday Programming
for Families

Studio & Gallery Activities

10:00 am – 3:00 pm

Café

Hours: 11 am – 3 pm
Tuesday – Sunday
(kids menu available)

For more information please call
(616) 831-2927



Answers

1. *River*, 1989
Joan Mitchell

2. *Scene in the Susten Pass*
Switzerland, 1842
Asher B. Durand

3. *Sunlit Interior*,
c. 1914
Will Howe Foote