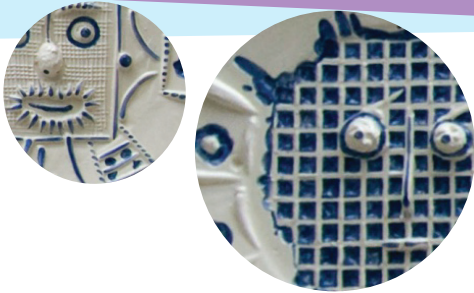


The Lighter Side of GRAM Family Gallery Guide

The Grand Rapids Art Museum can seem like a serious place. The rules we have to help protect the art such as no running, no touching, no shouting, can make the Museum feel like a “no fun zone.” But, if you look closely at the works of art there are some surprises. Funny, tricky, and weird surprises. Lets go find them!



Head into the Design and Modern Craft gallery on the first floor!

Look for the plates with faces. Who is the artist? Have you ever heard of him?

How do you think it would feel to eat off one of these plates?

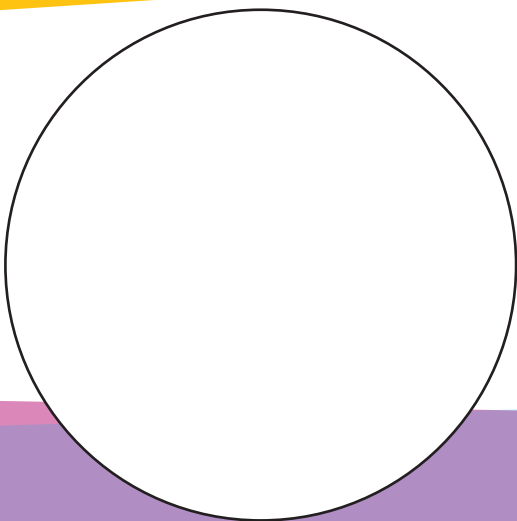
“Are we to paint what’s in the face, what’s inside the face, or what’s behind it?”
-Pablo Picasso

Many cultures have incorporated faces into their pottery. Pablo Picasso was inspired by ancient Amazonian and Mozarabic pottery. What similarities do you notice?



Draw your own plate here!

What foods could you use to make a face...meatball cheeks? Broccoli mustache?



Turn over guide and take the stairs or the elevator to the third floor!

Can you find this doll? Hint: the girl in the portrait is wearing pink & black.



Deacon Robert Peckham was known for including images of toys and pets in his portraits of children. The toys tell us more about the personality of the child. What kinds of toys would you put in your portrait?

Use the empty space to create your own self portrait!

Tricky shapes can fool the eye...can you find two works by Ellsworth Kelly that seem to be square?



Look at the two prints from far away, now walk up closer. Do the shapes look the same at each distance? What about the color?

Activity: Fold the paper on the grey line and tear out the section within the square. Hold your paper with your arms extended and look through the opening to discover shapes in the gallery around you!

